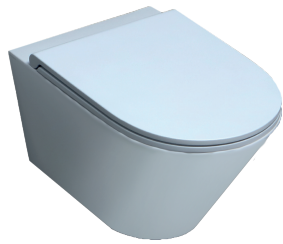


FORMA chasse silencieuse

AZZURRA®

FMVKSPE0000W



Sanitaires suspendus Easy Clean / Easy Clean wall hung mounted sanitary wares

code
code

Cuvette Forma Easy Clean suspendu avec chasse à vortex silencieuse
Forma Easy Clean vortex silent flush system

bianco lucido/ shiny white

FMVKSPE0000WBI

Finis COLORS 1250° / COLORS 1250° finishing

(Spécifiez la couleur lors de la commande / Specify the color when ordering)

FMVKSPE0000W... CT/CE/CA...

Finis SHINE // SHINE finishing

(Spécifiez la couleur lors de la commande / Specify the color when ordering)

FMVKSPE0000W... PS/SA/SS...

cm 54x37xh34 / 21 1/4x14 9/16xh13 3/8"

kg 24

Technologies / technologies:



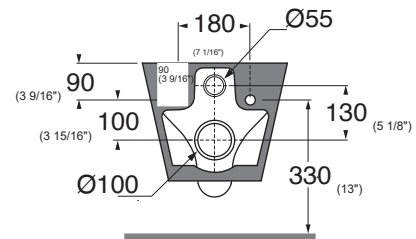
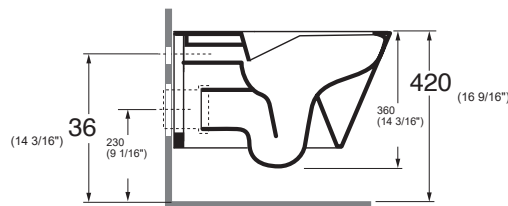
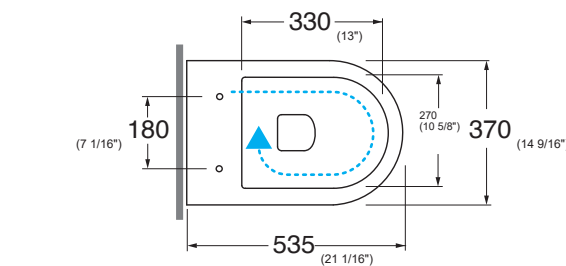
water saving



chasse à vortex



easy clean



Éch. /scale 1:20 Dimensions /dimensions in mm

Gamme de couleurs disponible pour cuvette et siège

COLORS 1250°



Céramique / Ceramic



BI
bianco lucido
shiny white

SHINE



PS pesca lucida shiny peach SA savia lucida shiny sage SS sasso lucido shiny stone MA mango lucido shiny mango CL ciliegia lucida shiny cherry OC oceano lucido shiny ocean NL nero lucido shiny black

Compléments / complements:



Siège thermodurcissable
avec fermeture à friction et déclenchement rapide
Thermosetting soft close seat cover
with quick release

bianco lucido/ shiny white

FOR 1800/F

COLORS 1250

FOR 1800/F...CT CA CE...

SHINE

FOR 1800/F...PS SA SS...

specificare il colore al momento dell'ordine
specify the color when ordering

Code
code



Fixation rapide pour support universel
Quick fastener for multipurpose bracket

INCLUS
INCLUDED

KIT 2000 SO

Code
code

TECHNICAL SHEET n°: 01	DESIGNER: OFFICINA AZZURRA	CODE: FMVKSPE0000W	Azzurra sanitari in ceramica S.p.a. via Civita Castellana snc 01030 Castel S.Elia (VT) - ITALY Tel.+39.0761 518155 Fax.+39.0761 514560	
SHEET FORMAT: A4	ISO	REVISION: 05	SCALE: 1:20	DATE: 14/03/2025
REGULATIONS: CE EN 997 / EN33 / Dop-997*				
All the measurements respect the tolerances provided by the "AZZURRA QUALITY GUIDELINES".				



* Regulations here shown are exclusively referred to ceramic items